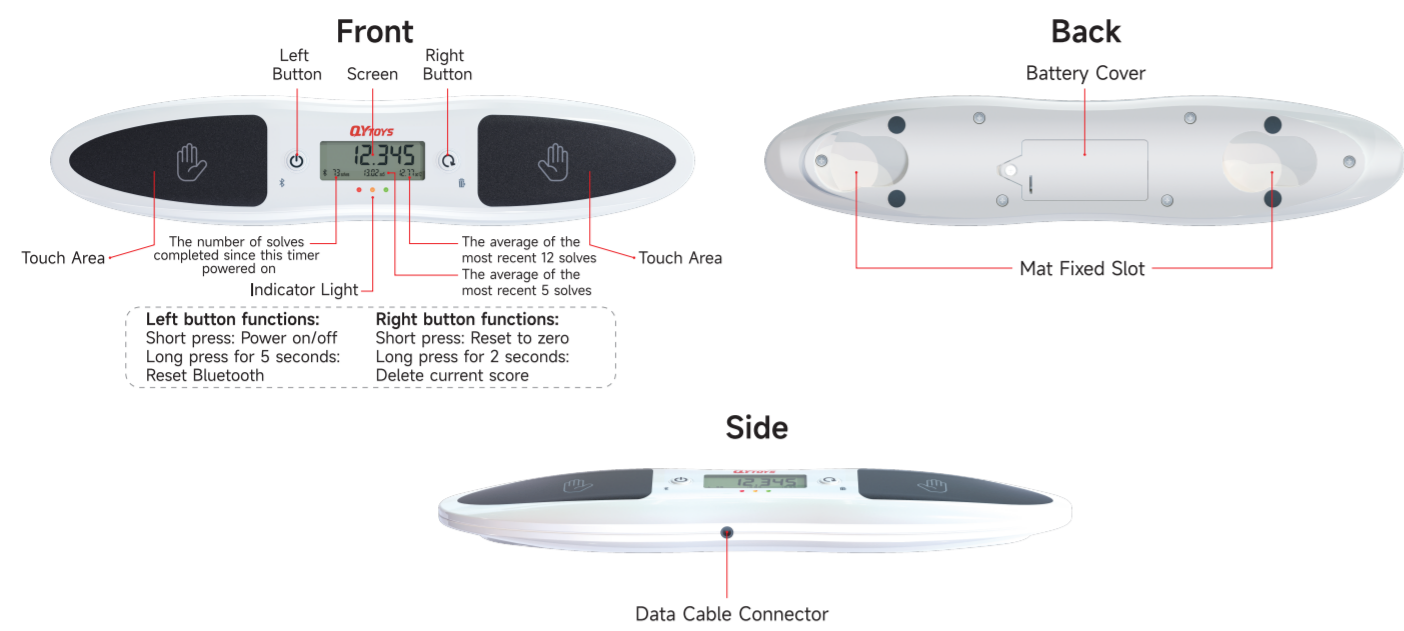


Instructions of QY Smart Timer

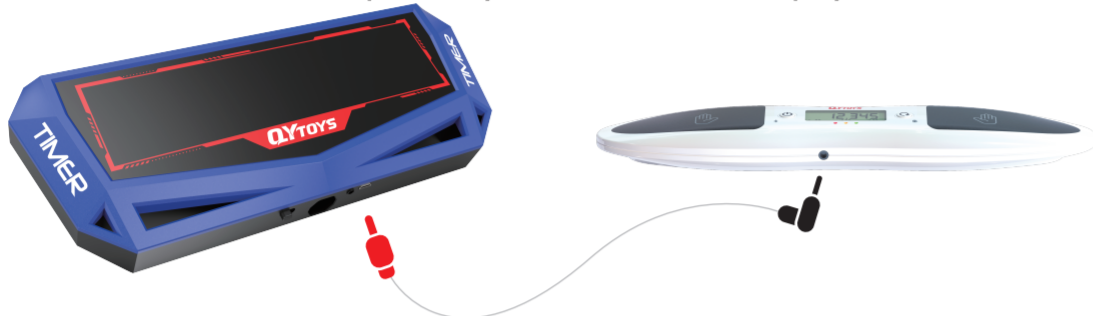
1. Exterior Introduction



2. Instructions

The timer could be used alone and connected to the Tournament Display.

The QY Smart Timer can be used independently or connected to a display



3. APP Download

The QY Smart Timer can be used independently or connected to a mobile APP for enhanced functionality.

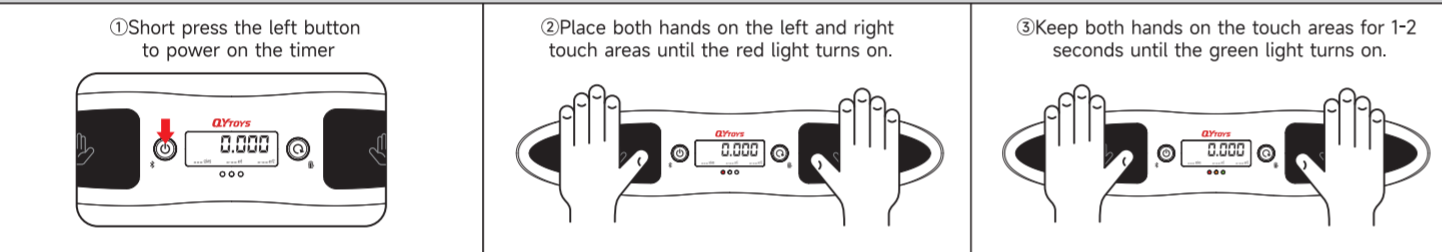


①Scan the QR code to download the APP (recommended).
②For iPhone users, you can search for "Smart Player" in the APP Store to download and install the APP. For Android users, you can search for "Smart Player" in Google Play to download and install the APP.

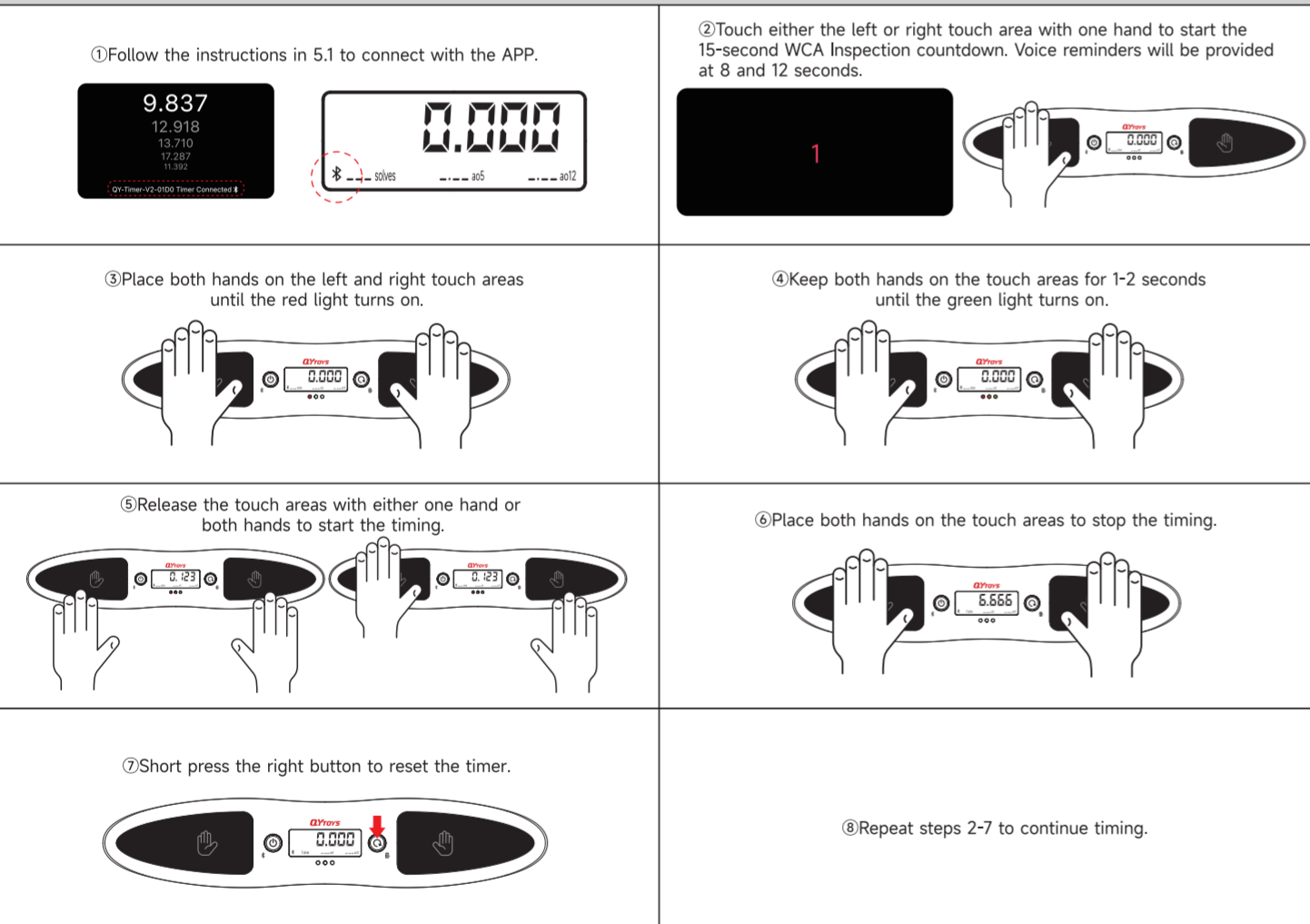
*The Apple logo and App Store are trademarks registered by Apple Inc. in the United States and other countries and regions.
*The Google Play logo is a registered trademark of Google Inc.

4. Standalone Use (Without Connecting to the APP)

-1. A complete timing process is as follows:

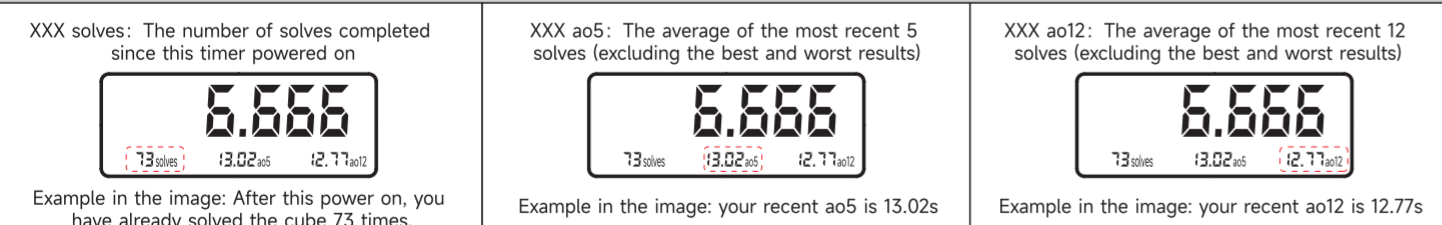


-2. Here is the complete timing process (Connecting with the APP)

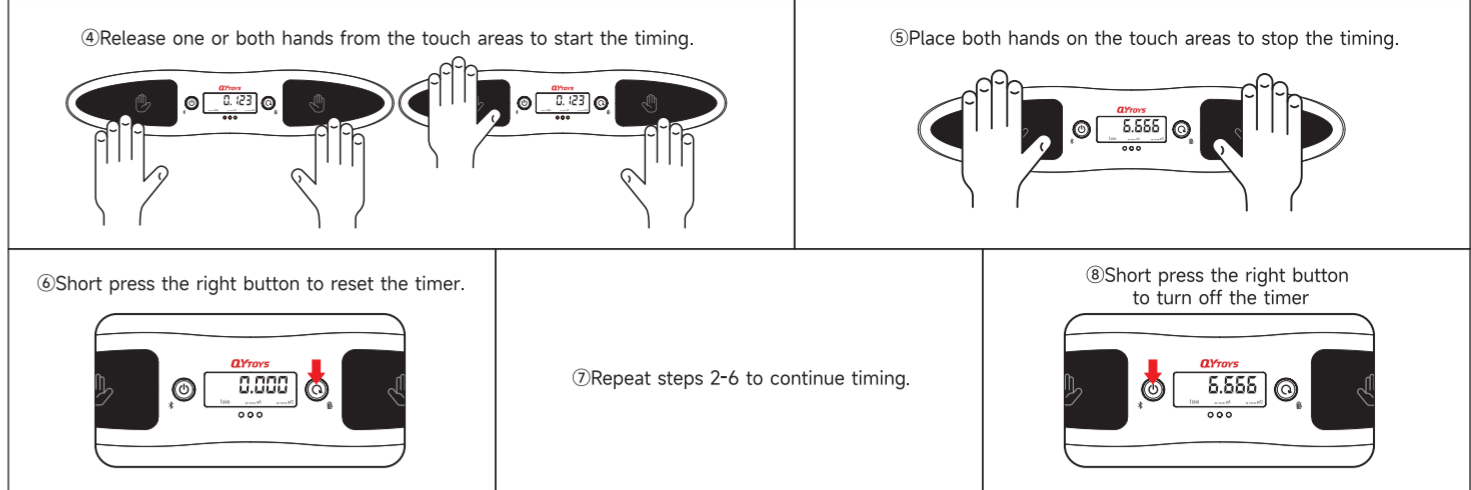


-3. Check the number of solves and average results

You can check the current number of solves and the averages in the bottom area of the timer screen.

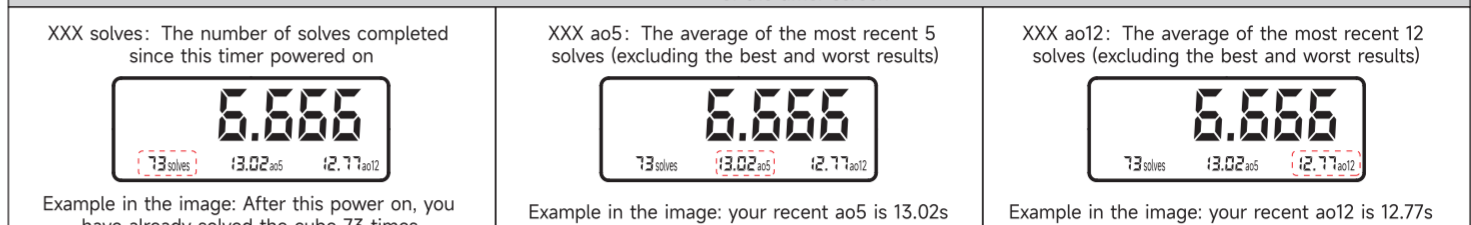


Note: You can view all uploaded results, statistical information, and chart analysis on the APP!

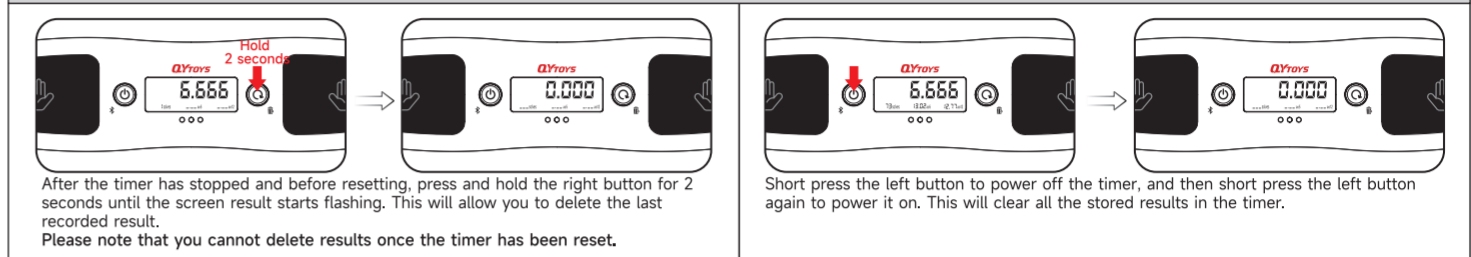


-2. Check the number of solves and average results

You can check the current number of solves and the averages in the bottom area of the timer screen.



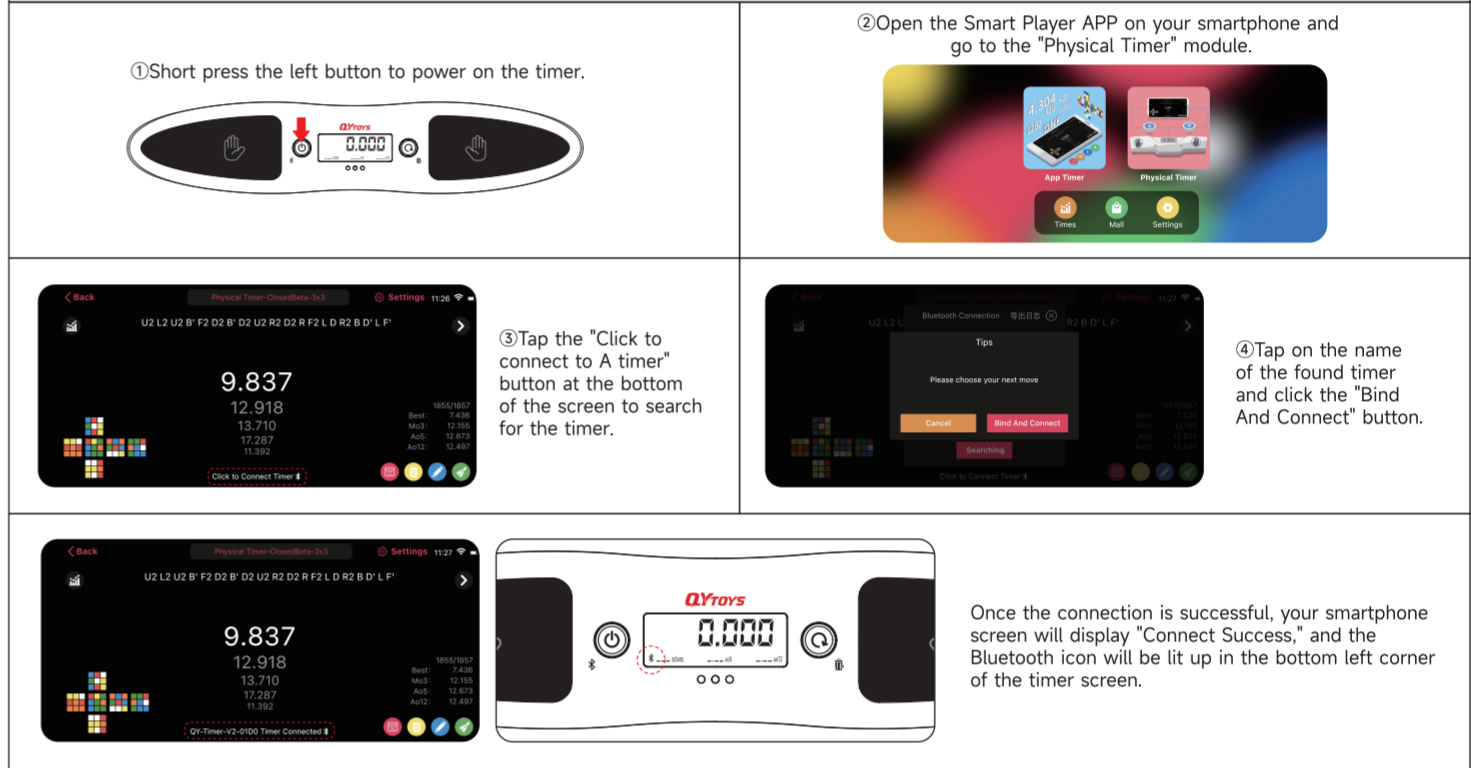
-3. Delete a single result or clear all results.



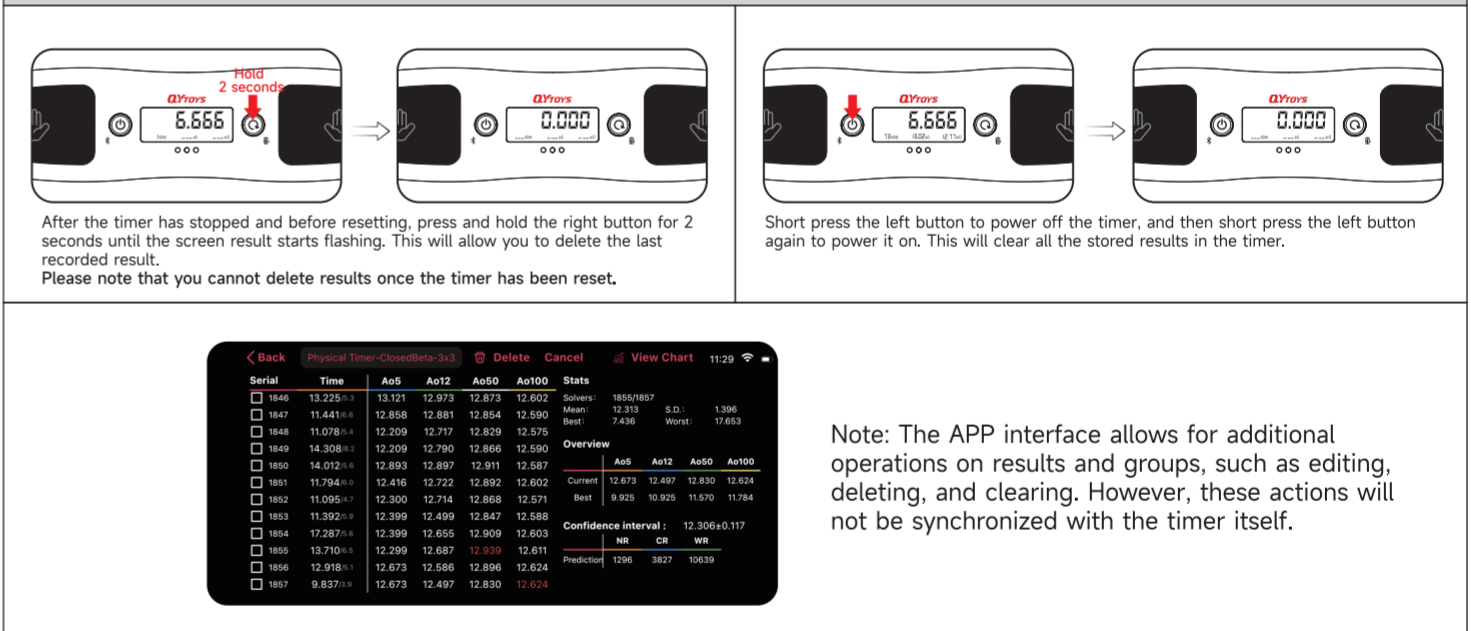
5. Connecting with the APP (Recommended)

We recommend connecting your QY Smart Timer with the Smart Player APP for a better experience.

-1. Connecting with the APP

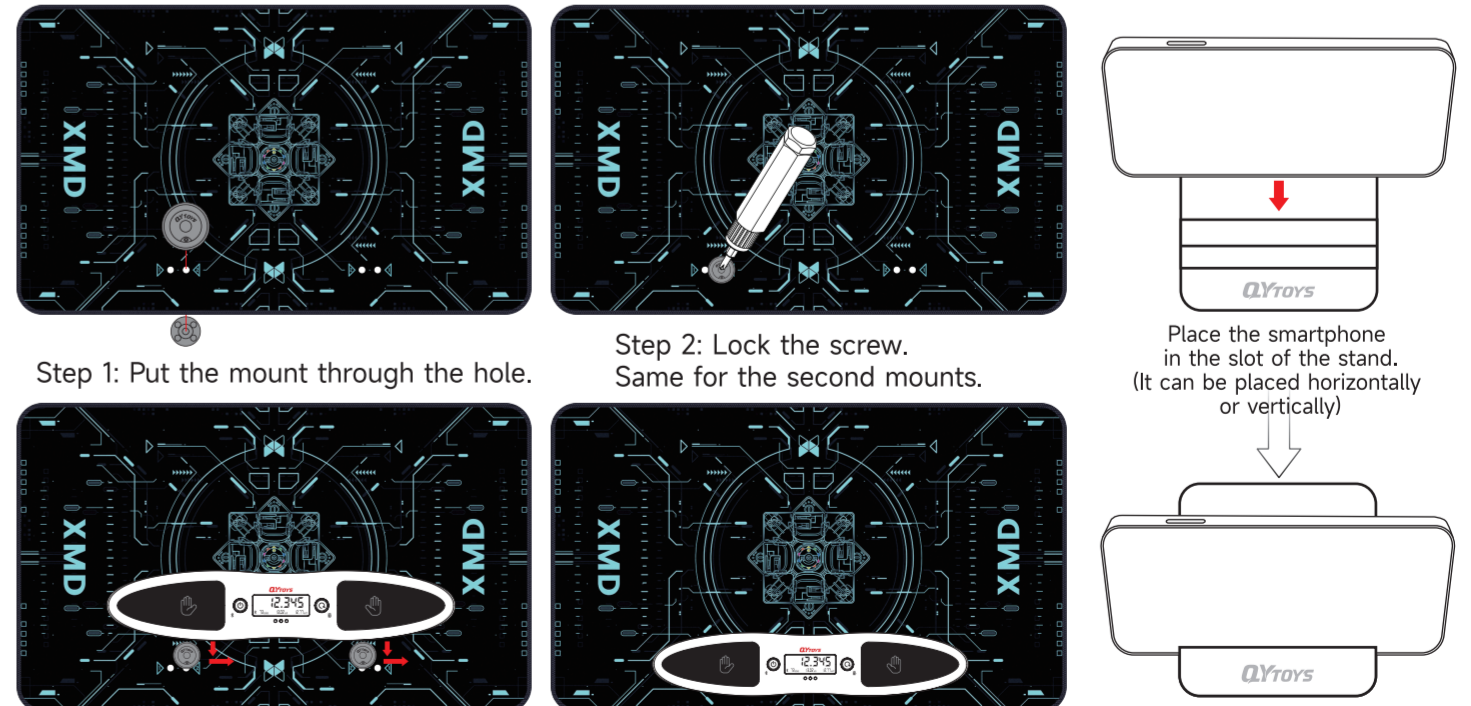


-4. Delete a single result or clear all results



6. Instructions for using the timer fixed on the cube mat and the smartphone stand

- Required Tools:**
- QY Cube Mat (Mat hole specifications: For timer V1, hole spacing is 195mm; for smart timer, hole spacing is 165mm; hole size is 6mm; distance from the edge is 45mm).
 - QY Cube Timer Clips and two dedicated screws (included with the timer).
 - Phillips screwdriver.



Step 3: Match the mounts and the holes from timer's back side. Push to the left to finish.

Finished!

7. Troubleshooting

If you encounter issues such as being unable to connect to the timer or power it on, you can try the following steps:

- Long-press the left button for 5 seconds to reset the timer's Bluetooth, and then try connecting again.
- Completely close the APP, restart it, and try connecting again.
- Restart the Bluetooth function on your phone or restart your phone, and then try connecting again.
- Remove and reinstall the timer's battery, or replace it with a new one, and then power it on.
- For further assistance, please visit one-think.com for technical support or contact us at service@one-think.com via email.